

Timing tools



315 020 000

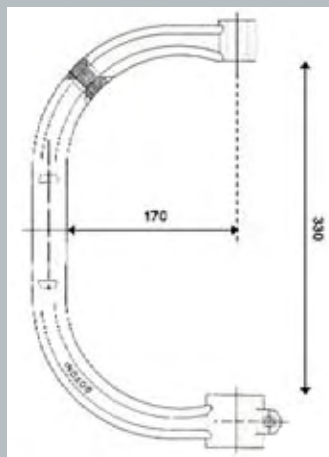


Air operated valve spring compressor:

Case Dimensions: 485 x 375 x 135 mm.
 Machine weight: 5 Kg.
 Alimentation: Air pressure min 6 bar., max 10 bar
 Power: 6 bar=75 Kg, 10 bar=100 Kg.

Universal pneumatic tool for assembling and disassembling engine valves, suitable for all types of valves on petrol and diesel engines. Practical and easy to use, it permits time saving up to 60-70%, especially during valve assembly. APPOSITELY MADE FOR ENGINES WITH 4/5 VALVES FOR CYLINDER.

CE approved machine in compliance with 98/37/CE (Machine Directive)



Included

315 020 002

Pressure foot d. 25,5 with 5 adaptors: 24,5 - 25 - 27 - 29 - 32 mm.



Included

315 020 003

Pressure foot d. 34 with 3 adaptors: 34 - 41 - 50 mm.



Included

315 020 006

Pressure foot d. 19,8 mm.



315 021 000

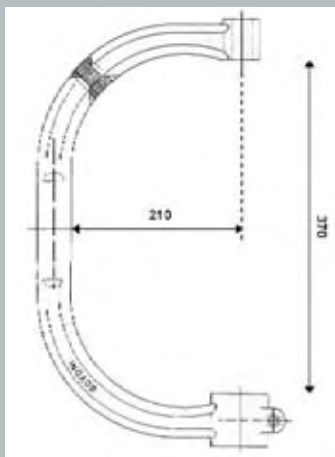


Air operated Heavy Duty valve spring compressor:

Case Dimensions: 485 x 375 x 135 mm.
Machine weight: 6 Kg.
Alimentation: Air pressure min 6 bar., max 10 bar
Power: 6 bar=118 Kg, 10 bar=157 Kg.

Universal pneumatic tool for assembling and disassembling engine valves, suitable for all types of valves on petrol and diesel engines. Practical and easy to use, it permits time savings of up to 60-70%, especially during valve assembly. APPOSITELY MADE FOR ENGINES WITH 4/5 VALVES FOR CYLINDER.

CE approved machine in compliance with 98/37/CE (Machine Directive)



Engine - valves



Included

315 020 002

Pressure foot d. 25,5 with 5 adaptors:
24,5 - 25 - 27 - 29 - 32 mm.



Included

315 020 003

Pressure foot d. 34 with 3 adaptors:
34 - 41 - 50 mm.



Included

315 020 006

Pressure foot d. 19,8 mm.



Timing tools

315 019 000



Manual bench useful to assembly and disassembly engine valves complete with three pressure feet.

Technical data:

Dimensions: A=785 mm. B=500 mm. C=625 mm.
 Stroke: D = 265 mm.
 Cylinder Head: 750 mm. max length: 185 mm. min
 Cylinder Head: inclination=0-30°
 Total Weight: 25,5 kg.

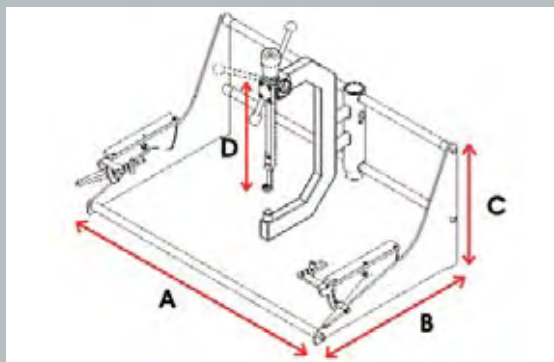
The two head supports are implemented with non-scratch plastic material and are adjustable from 0 to 30°.

There are two handles for locking when the right inclination is set.

It is also possible to regulate the horizontal position of the head moving the pins to the apposite holes up and down. There is a long regulation also for the push rod in case of deep valve chambers. The frame can be rotated 30° on both sides.

Moreover can be regulated also forward and backwards. In case of valves locked hard into the seat, hit on the slide hammer on the top with a plastic mallet. The bench is also provided with a Travel limit device that guarantees the same stroke for each valve.

Meanwhile the valve spring is compressed, the operator can block the position using the apposite pin. Consequently he can work on the valves having both hands free.



Included

315 020 002

Pressure foot d. 25,5 with 5 adaptors: 24,5 - 25 - 27 - 29 - 32 mm.



Included

315 020 003

Pressure foot d. 34 with 3 adaptors: 34 - 41 - 50 mm.



Included

315 020 006

Pressure foot d. 19,8 mm.



315 024 000



Extra Heavy Duty pneumatic Valve Spring compressor.

Machine Dimensions: 630 x 300 x 95 mm.
Case Dimensions: 485 x 375 x 185 mm.
Machine weight: 7,2 Kg.
Packaging weight: 9 Kg.
Alimentation: Air pressure min 6 bar., max 10 bar
Power: 10 bar=500 Kgf.

Full Pressure feet equipped

Jaws handle springs from 19 mm. to 50 mm. (3/4" to 2") diameter. Quick and precise adjustment in millimeters increments thanks to its locking handle.

Cylinder: Stroke

Cylinder stroke is 90 mm. (3" 1/2) that allows to compress any kind of springs and at same time guarantees safety;

Cylinder: High Power

It needs only 6 bar (90 psi) of compressed air to operate. With a working pressure of 10 bar (145 psi) the Spring Compressor force is 500 kgf. (1.102 lbf);

Aluminium Technology

The cylinder is made in light alloy and nylon resin with fibreglass avoiding consequently the corrosion and the oxidation of the parts of the machine;

Strong C-Frame system

Heavy-duty frame is CNC-machined and made of quality steel;

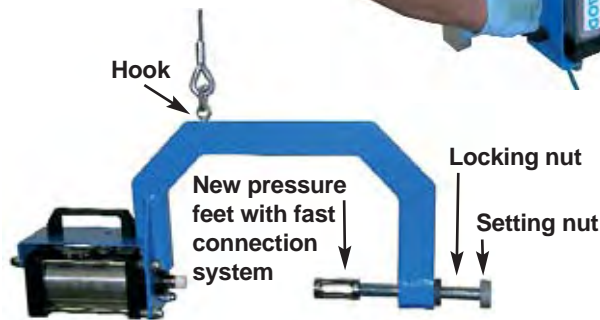
Safety Valve

The drive valve can function only when the Spring Compressor is connected to the compressed air system. Consequently the machine can be disconnected while the spring is compressed without dangers assuring the maximum safety.

Easy and quick to place and handle. It needs only to be connected to the air system.

CE approved machine in compliance with 98/37/CE (Machine Directive)

Engine - valves



Included

315 024 014

Pressure foot d. 40 mm.



Included

315 024 015

Pressure foot d. 32 mm.



Included

315 024 016

Pressure foot d. 23,5 mm.



Included

315 020 007

Magnet. - Lenght = 165 mm.



NEW PRODUCT

Engine - valves

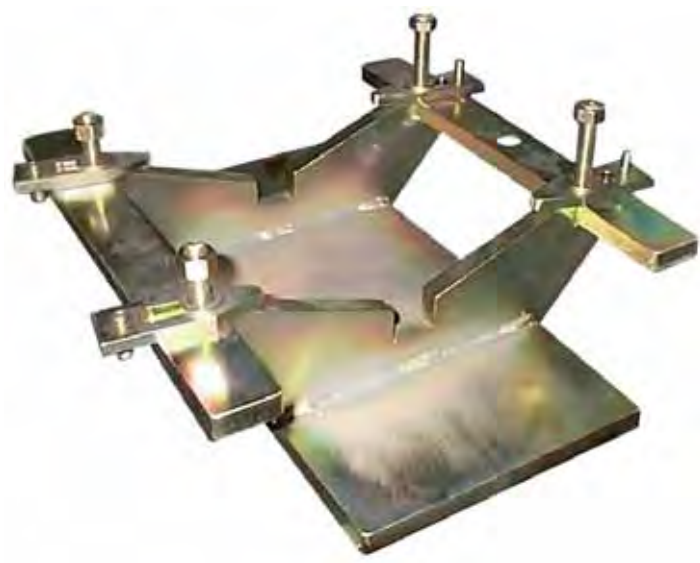


315 020 007

Magnet. - Lenght = 165 mm.



Engine - valves



314 011 000

Special head support useful to resurface cylinder head on Fiat 1.6 16v gasoline engines.

Supporto per rettifica testate dei motori Fiat 1.6 litri 16v.



Engine - valves



315 007 000

Cylinder head support.

Cylinder head support facilitates a wide range of operations on any type of cylinder head (valve assembling/disassembling, valve-seat grinding, conduits cleaning, tappets adjustment, etc.).

Cylinder heads range: 6 - 90 cm.
Support plates rotation: 360°.

Code 315 007 000 may be held in a vice or, using the holes provided, fixed to an engine stand.

