

BOCK
GMBH



LIFTING UP SAFELY

Rubberpads



page 3

Rubberblocks



page 10

Rubberplates



page 13

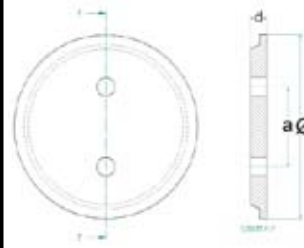
Special equipments



page 16



ord.no.: 015

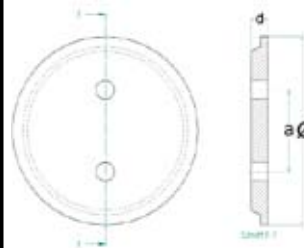


Rubberpads suitable for:
JAB BECKER

$\text{Ø} = 115 \text{ mm}$
a = 73 mm
d = 20 mm
0,25 kg



ord.no.: 024481

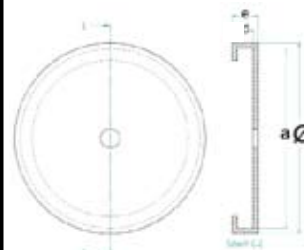


Rubberpads suitable for:
JAB BECKER

$\text{Ø} = 120 \text{ mm}$
a = 73 mm
d = 21 mm
0,15 kg



ord.no.: 169100 MET



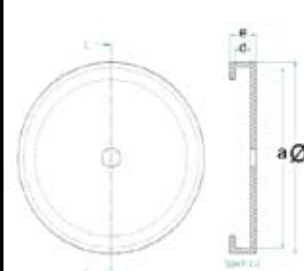
with steel plate

Rubberpads suitable for:
**JAB BECKER /
HOFMANN / HERMANN**

$\text{Ø} = 120 \text{ mm}$
a = 119 mm
d = 4 mm
e = 16 mm
0,15 kg



ord.no.: 335022

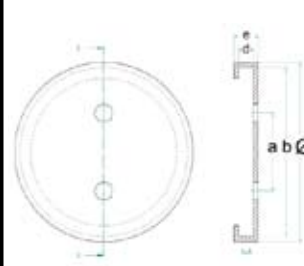


Rubberpads suitable for:
HOFMANN

$\text{Ø} = 140 \text{ mm}$
a = 132 mm
d = 4 mm
e = 17 mm
0,20 kg



ord.no.: GK 125/120



with steel plate

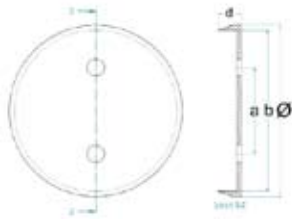
Rubberpads suitable for:
SLIFT / IME

$\text{Ø} = 127 \text{ mm}$
a = 83 mm
b = 120 mm
d = 9 mm
e = 28 mm
0,35 kg

Rubberpads suitable for:

SLIFT / IME

$\varnothing = 155 \text{ mm}$
 $a = 85 \text{ mm}$
 $b = 153 \text{ mm}$
 $d = 16 \text{ mm}$
 0,30 kg



with steel plate



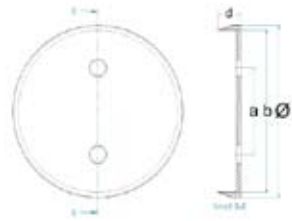
ord.no.: GK 155/16

Rubberpads suitable for:

SLIFT / IME

$\varnothing = 122 \text{ mm}$
 $a = 80 \text{ mm}$
 $b = 116 \text{ mm}$
 $d = 12 \text{ mm}$
 0,15 kg

10,09 €



with steel plate

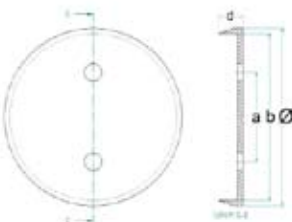


ord.no.: GK 122/12

Rubberpads suitable for:

NUSSBAUM

$\varnothing = 125 \text{ mm}$
 $a = 90 \text{ mm}$
 $b = 120 \text{ mm}$
 $d = 24 \text{ mm}$
 0,35 kg



with steel plate inside



ord.no.: 01.103031

Rubberpads suitable for:

KONI

$\varnothing = 105 \text{ mm}$
 $a = 100 \text{ mm}$
 $d = 10 \text{ mm}$
 $e = 26 \text{ mm}$
 0,15 kg

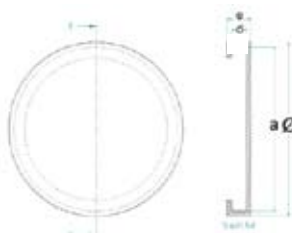


ord.no.: SK 20 30-105

Rubberpads suitable for:

KONI

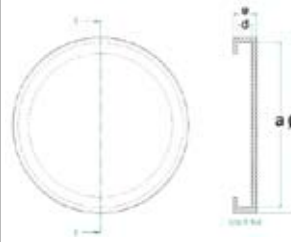
$\varnothing = 124 \text{ mm}$
 $a = 120 \text{ mm}$
 $d = 5 \text{ mm}$
 $e = 17 \text{ mm}$
 0,15 kg



ord.no.: SK 2030-124



ord.no.: SK 2030-160

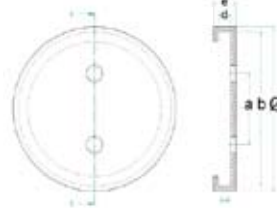


Rubberpads suitable for:
KONI / ROMEICO

$\varnothing = 160 \text{ mm}$
 $a = 153 \text{ mm}$
 $d = 10 \text{ mm}$
 $e = 28 \text{ mm}$
 0,26 kg



ord.no.: 36001.04.04.001

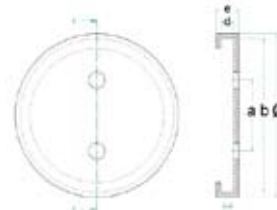


Rubberpads suitable for:
MAHA old / SLIFT

$\varnothing = 120 \text{ mm}$
 $a = 83 \text{ mm}$
 $b = 112 \text{ mm}$
 $d = 5 \text{ mm}$
 $e = 28 \text{ mm}$
 0,15 kg



ord.no.: 115 17 20 24

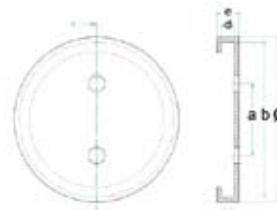


Rubberpads suitable for:
MAHA / SLIFT

$\varnothing = 100 \text{ mm}$
 $a = 63 \text{ mm}$
 $b = 90 \text{ mm}$
 $d = 5 \text{ mm}$
 $e = 21 \text{ mm}$
 0,10 kg



ord.no.: 17 2023 01 **MET**



with steel plate
inside

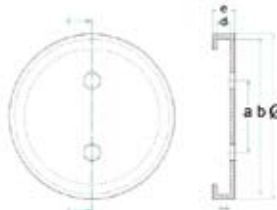
Rubberpads suitable for:
MAHA new

$\varnothing = 120 \text{ mm}$
 $a = 83 \text{ mm}$
 $b = 113 \text{ mm}$
 $d = 8 \text{ mm}$
 $e = 22 \text{ mm}$
 0,30 kg

Alternativ



ord.no.: 17 2023 01



Rubberpads suitable for:
MAHA new

$\varnothing = 120 \text{ mm}$
 $a = 83 \text{ mm}$
 $b = 113 \text{ mm}$
 $d = 8 \text{ mm}$
 $e = 22 \text{ mm}$
 0,15 kg

Rubberpads suitable for:

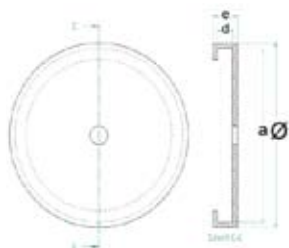
RAVAGLIOLI

$\varnothing = 144 \text{ mm}$

$a = 117 \text{ mm}$

$e = 20 \text{ mm}$

0,30 kg



ord.no.: 121KPZ215

Rubberpads suitable for:

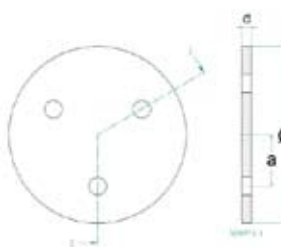
RAVAGLIOLI / OMCN

$\varnothing = 145 \text{ mm}$

$a = 45 \text{ mm}$

$d = 26 \text{ mm}$

0,30 kg



ord.no.: 047021040

Rubberpads suitable for:

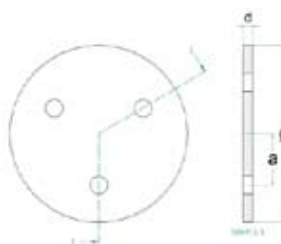
RAVAGLIOLI

$\varnothing = 120 \text{ mm}$

$a = 36 \text{ mm}$

$d = 27$

0,25 kg



ord.no.: 04640577

Rubberpads suitable for:

RAVAGLIOLI / WERTHER

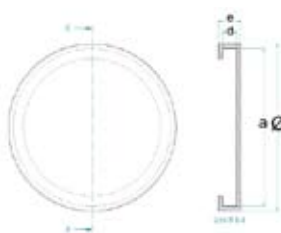
$\varnothing = 123 \text{ mm}$

$a = 118 \text{ mm}$

$d = 10 \text{ mm}$

$e = 25 \text{ mm}$

0,30 kg



with steel plate
inside



ord.no.: 046405772 **MET**

Rubberpads suitable for:

RAVAGLIOLI / WERTHER

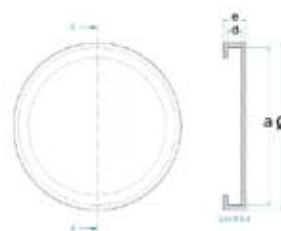
$\varnothing = 123 \text{ mm}$

$a = 118 \text{ mm}$

$d = 10 \text{ mm}$

$e = 25 \text{ mm}$

0,20 kg



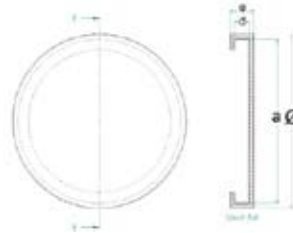
Alternativ



ord.no.: 046405772



ord.no.: 047021850 **MET**



with steel plate
inside

Rubberpads suitable for:

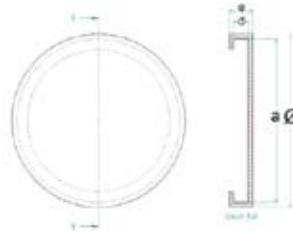
**RAVAGLIOLI /
SIRIO / SPACE**

Ø = 100 mm
a = 87 mm
d = 9 mm
e = 21 mm
0,20 kg

Alternativ



ord.no.: 047021850



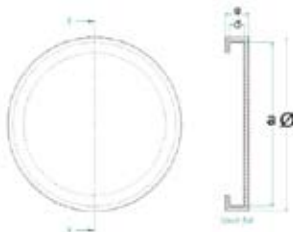
Rubberpads suitable for:

**RAVAGLIOLI /
SIRIO / SPACE**

Ø = 100 mm
a = 87 mm
d = 9 mm
e = 21 mm
0,10 kg



ord.no.: 047021041



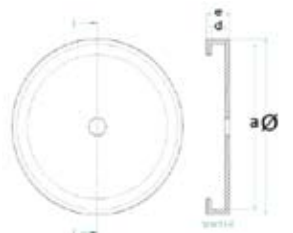
Rubberpads suitable for:

RAVAGLIOLI

Ø = 148 mm
a = 140 mm
d = 10 mm
e = 25 mm
0,26 kg



ord.no.: 15.87.425



with steel plate
inside

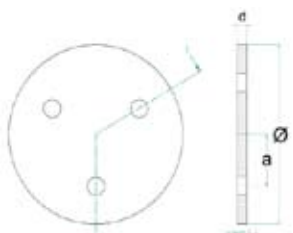
Rubberpads suitable for:

ZIPPO

Ø = 127 mm
a = 123 mm
d = 8 mm
e = 22 mm
0,15 kg



ord.no.: 15.87.420



with steel plate
inside

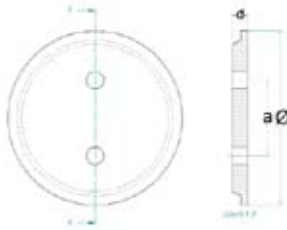
Rubberpads suitable for:

ZIPPO

Ø = 120 mm
a = 44 mm
d = 16 mm
0,30 kg

Rubberpads suitable for:
STENHOJ / AUTOP

$\varnothing = 121 \text{ mm}$
a = 65 mm
d = 9 mm
0,20 kg



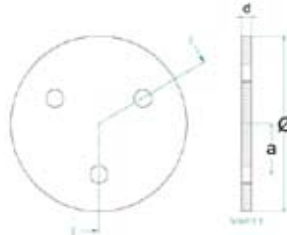
with steel plate
inside



ord.no.: 664202

Rubberpads suitable for:
STENHOJ / AUTOP

$\varnothing = 158 \text{ mm}$
a = 47 mm
d = 11 mm
0,40 kg



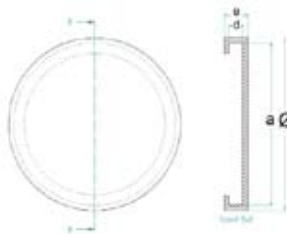
with steel plate
inside



ord.no.: 664160

Rubberpads suitable for:
CONSUL

$\varnothing = 138 \text{ mm}$
e = 18 mm
0,75 kg



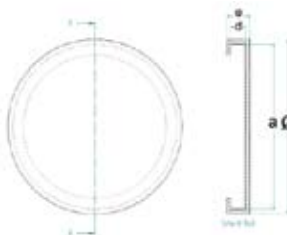
with steel plate



ord.no.: 02-Consul

Rubberpads suitable for:
ROMEICO

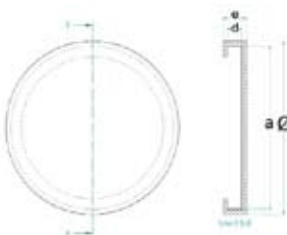
$\varnothing = 124 \text{ mm}$
a = 118 mm
d = 10 mm
e = 22 mm
0,15 kg



ord.no.: Romeico 124

Rubberpads suitable for:
EUROLIFT

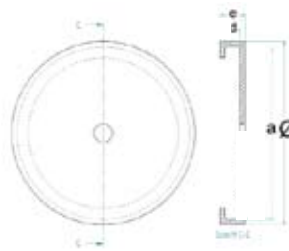
$\varnothing = 128 \text{ mm}$
a = 112 mm
d = 8 mm
e = 22 mm
0,20 kg



ord.no.: ZAV 41113



ord.no.: OMCN-140



Rubberpads suitable for:

OMCN

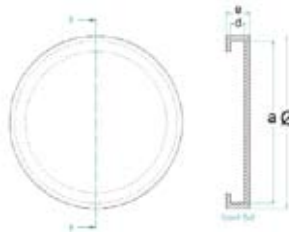
Ø = 143 mm

e = 27 mm

0,35 kg



ord.no.: ROTARY



Rubberpads suitable for:

ROTARY

Ø = 123 mm

a = 112 mm

d = 8 mm

e = 20 mm

0,20 kg



ord.no.: 149950

100 x 81 x 18 mm

0,15kg

Rubberpads suitable for:

JAB BECKER



ord.no.: 100100

dimension outside:

120 x 120 x 25 mm

dimension inside:

109 x 109 x 17

0,18 kg

Rubberpads suitable for:

Car jack

COMPAC / universal

Rubberblock suitable for:
**JAB BECKER / AUTOP /
universal**

150 x 150 x 70 mm
1,40 kg



ord.no.: 165030

Rubberblock suitable for:
**JAB BECKER / AUTOP /
universal**

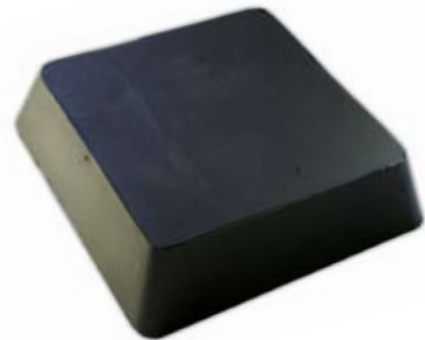
150 x 150 x 50 mm
0,95 kg



ord.no.: 165031

Rubberblock suitable for:
**JAB BECKER / AUTOP /
universal**

150 x 150 x 40 mm
0,80 kg



ord.no.: 165034

Rubberblock suitable for:
**JAB BECKER / AUTOP /
universal**

160 x 120 x 20 mm
0,60 kg



ord.no.: 165035



ord.no.: GK 12/8

120 x 120 x 80 mm
1,10 kg

Rubberblock suitable for:
SLIFT / IME



ord.no.: 38.31.830

small block:
200 x 100 x 70 mm
1,35 kg
with wooden core

Rubberblock suitable for:
ZIPPO / universal



ord.no.: 38.31.831

big block
230 x 140 x 120 mm
3,60 kg

Rubberblock suitable for:
ZIPPO / universal



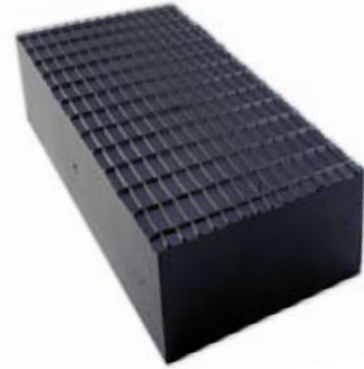
ord.no.: 165032

220 x 140 x 50 mm
1,80 kg

**universal
Rubberblock**

**universal
Rubberblock**

220 x 140 x 85 mm
2,75 kg
with wooden core



ord.no.: 165033H

Rubberblock suitable for:
MAHA / universal

120 x 100 x 50 mm
0,55 kg



ord.no.: 316930

Rubberblock suitable for:
HERKULES

120 x 100 x 30 mm
0,45 kg



ord.no.: 30 1000 12 030

synthetic block

small block:
340 x 132 x 47 mm

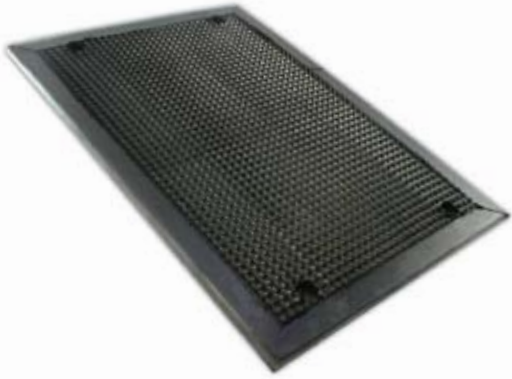
big block:
340 x 150 x 95 mm



big block
ord.no.: PE900 weiß groß



small block
ord.no.: PE900 weiß klein



ord.no.: 165029

380 x 260 x 13 mm
2,75 kg

Rubberplate suitable for:
JAB Becker



ord.no.: GK 40/2

400 x 350 x 16 mm
3,30 kg

Rubberplate suitable for:
SLIFT / IME



ord.no.: GK 40/12

400 x 350 x 12 mm
2,70 kg
new version

Rubberplate suitable for:
SLIFT / IME



ArtNr.: GK 53/12

535 x 350 x 12 mm
3,80 kg

Rubberplate suitable for:
**SLIFT / IME
for SUV**

Rubberplate suitable for:

**SLIFT / IME /
universal**

330 x 375 x 20 mm
2,35 kg

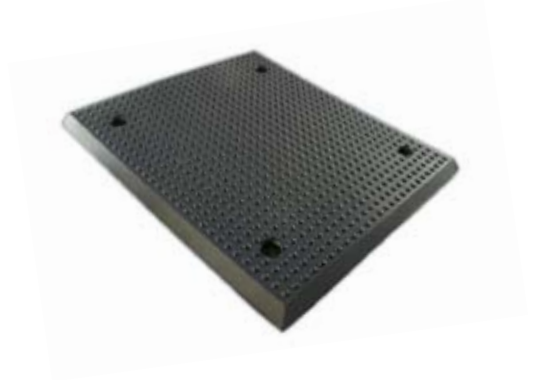


ord.no.: GK 34/2

Rubberplate suitable for:

MAHA / universal

370 x 330 x 20 mm
2,55 kg

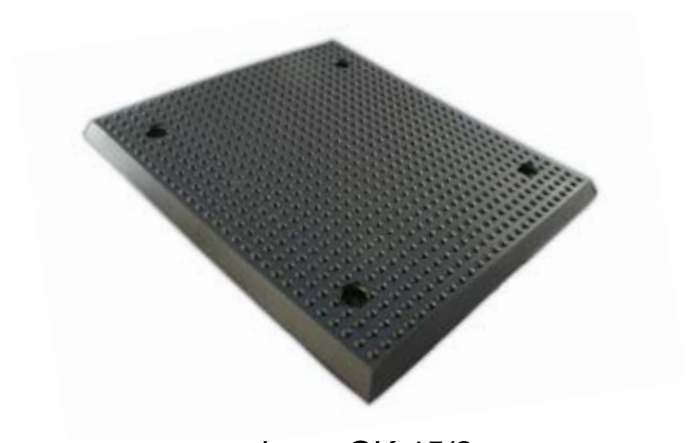


ord.no.: GK 39/2

Rubberplate suitable for:

MAHA / universal

450 x 450 x 20 mm
5,70 kg
old version

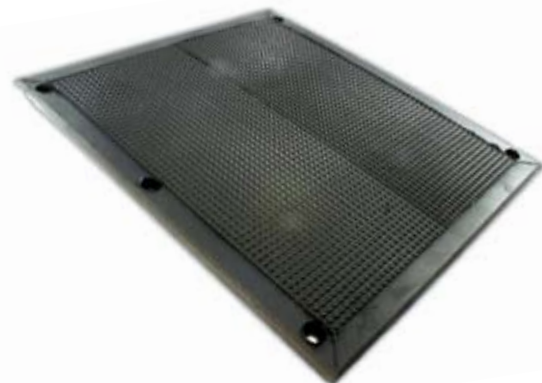


ord.no.: GK 45/2

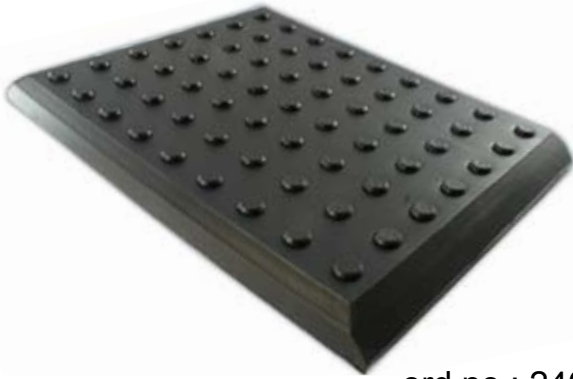
Rubberplate suitable for:

AUTOP

400 x 350 x 12 mm
3,35 kg
incl. screw connec-
tion



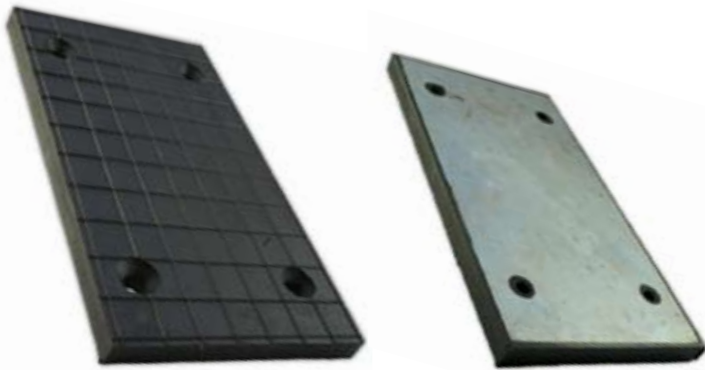
ord.no.: 37006/BÖ



ord.no.: 24003

405 x 305 x 35 mm
5,75 kg

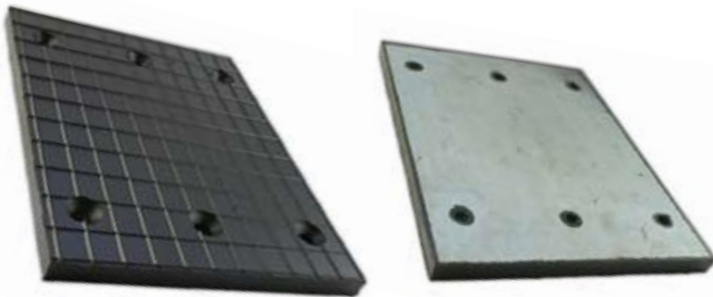
Rubberplate suitable for:
AUTOP



ord.no.: 507176

220 x 120 x 12 mm
0,85 kg

Rubberplate suitable for:
JAB BECKER
for truck post lift



ord.no.: 509281

220 x 170 x 12 mm
1,25 kg

Rubberplate suitable for:
JAB BECKER
for truck post lift



ord.no.: WZ-00931-A0

150 x 150 x 12 mm
0,75 kg

Rubberplate suitable for:
HYWEMA

**Liftadapter Volvo S80
/ universal**

suitable for Rubberpads
with:

Ø = 110-130 mm
Ø = 130-160 mm



ord.no.:LiftadapterS80 110-130

ord.no.:LiftadapterS80 130-160

**Liftboard Volvo S80
/ universal**

suitable for Scissor -
and Inground lifts with
plates



ord.no.: Liftboard S80

lifting extensions

for Volvo S80:

Ø = 30 mm

universal:

Ø = 30 mm

Ø = 50 mm

Ø = 60 mm

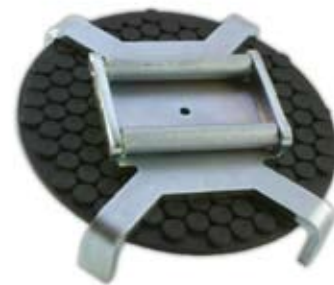
Ø = 100 mm



**special adapter for VW
BUS T5**

suitable for Rubberpads
with:

Ø = 110-130 mm
Ø = 130-160 mm



ord.no.: T5 110-130

ord.no.: T5 130-160